



The Online Trader 4.8

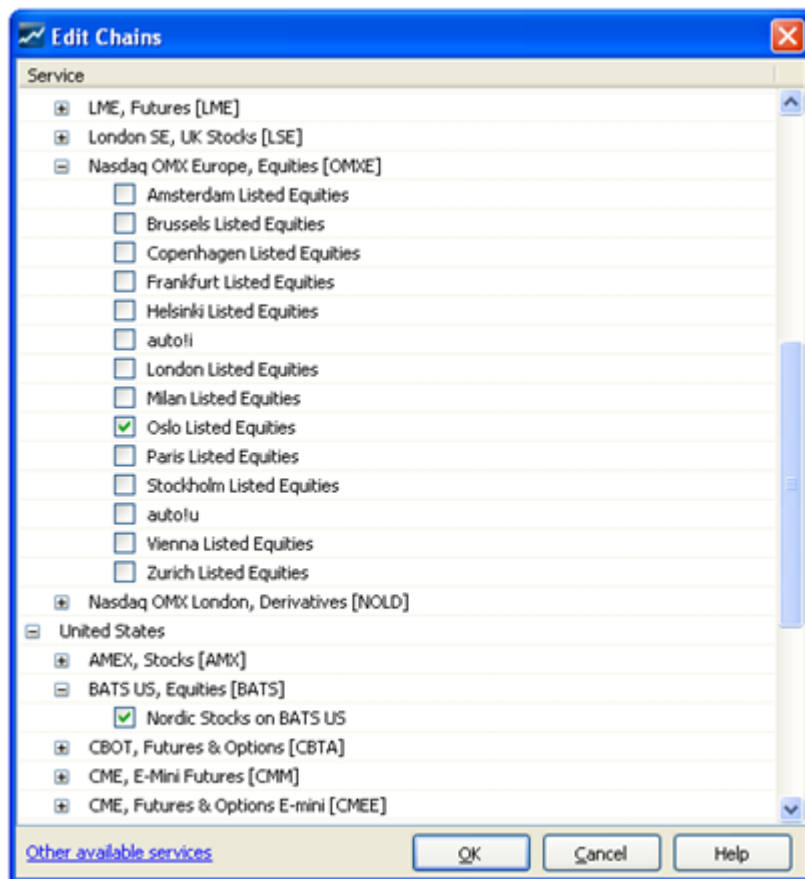
New Features, Improvements & Bugfixes

1 What's New in 4.8

Composite Window

Chains

In the Chains page of a Composite window, you can now select and display multiple chains from any number of markets. Press the Edit button on the toolbar to open a dialog where you can check the chains you want to include.



Market Window

New summary bar

The market window and composite window now includes a new summary bar displaying the following fields:

- Total number of symbols
- Change bar showing the distribution of positive/unchanged/negative changes from the last price.
- Tick bar showing the distribution of positive/unchanged/negative changes in the last trade.
- Total Market Cap. This field is only shown when all the symbols in the list have the same currency.

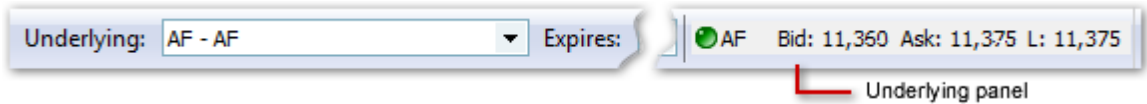
Total: 17 | **Change:** 9 (blue) 5 (grey) 3 (red) | **Tick:** 3 (blue) 11 (grey) | **M Cap:** 397 571m

Tip: you can turn the summary bar on/off by pressing F9

Show underlying values for Option feeds

You can now view the **Bid**, **Ask** and **Last** prices for the selected underlying symbol in the toolbar on the

Quotes and Put / Call tabs.

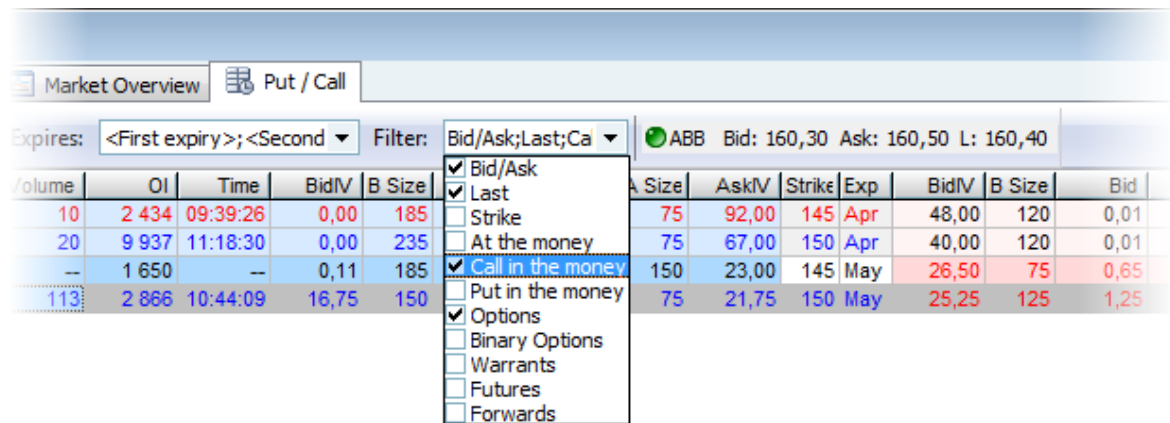


Tip: You can double click the underlying panel to open an Overview window for the underlying symbol.

New Option Feed Filters

Several new filters have been implemented for option feeds:

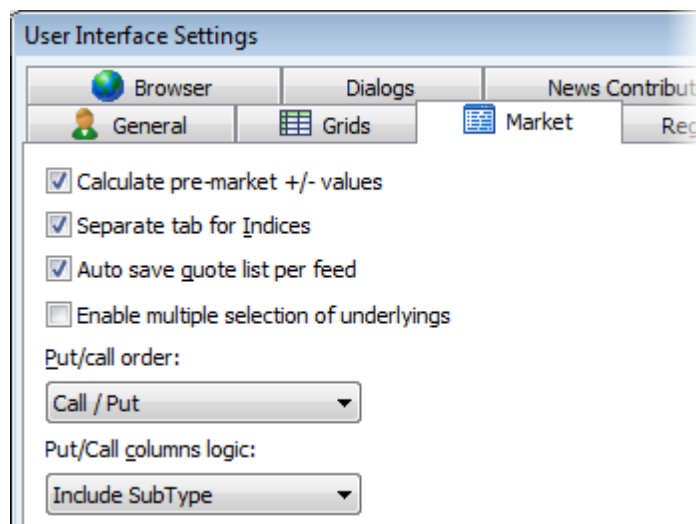
- Expiry filters
You can now filter by expiry dates. By default the first two expiries are selected.
- At the money (full option feeds only)
- Call in the money (full option feeds only)
- Put in the money (full option feeds only)



User interface settings for Put/Call

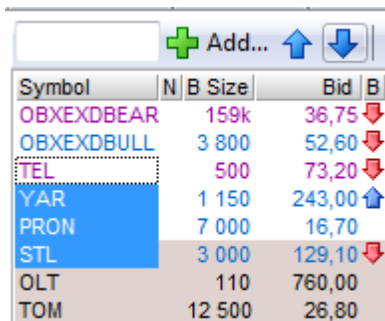
It is now possible to select and view sub type as a column in the Put/Call page. This can be switched on or off in the Market page of the *Tools | User Interface Settings* dialog.

You can also set the Put/Call order according to your preference.



List tab

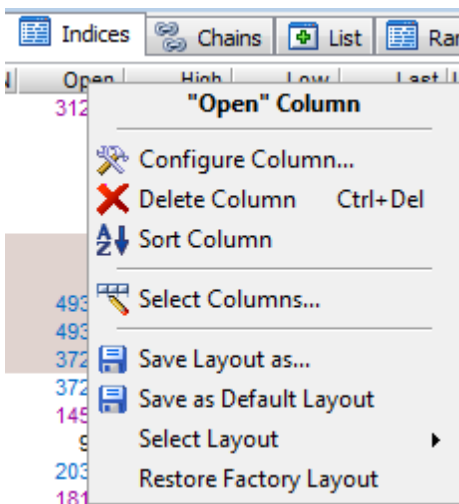
You can now select a block of symbols and move them up/down with the arrow buttons or pressing **<ctrl>+Up / <ctrl>+Down**.



Symbol	N B Size	Bid B
OBXEXDBEAR	159k	36,75 ↓
OBXEXDBULL	3 800	52,60 ↓
TEL	500	73,20 ↓
YAR	1 150	243,00 ↑
PRON	7 000	16,70
STL	3 000	129,10 ↓
OLT	110	760,00
TOM	12 500	26,80

Indices tab

The indices tab has now a separate layout which by default excludes bid, ask and turnover columns. A default column layout can be saved for this page only.



New Recommendation Bar columns

There are now two new columns available; Factset Recommendation Bar and SME Direkt Recommendation Bar.

ne	Symbol	Turnover	Time	F Rec.Bar	S Rec.Bar
0k	ABB	82m	10:32:01	[Green/Red]	[Green/Red]
9k	ALFA	49m	10:31:39	[Green/Red]	[Green/Red]
13k	ALIV SDB	75m	10:31:06	[Green/Red]	[Green/Red]
3k	AOIL SDB	12m	10:30:53	[Green/Red]	[Green/Red]
12k	ASSA B	58m	10:31:59	[Green/Red]	[Green/Red]
0k	ATCO A	76m	10:30:51	[Green/Red]	[Green/Red]
1k	ATCO B	20m	10:30:50	--	[Green/Red]
91	AXFO	3 329k	10:31:24	[Green/Red]	[Green/Red]
16k	AZN	67m	10:31:49	[Green/Red]	[Green/Red]
18k	BOL	144m	10:31:58	[Green/Red]	[Green/Red]
73	CAST	3 281k	10:24:41	[Green/Red]	--
34	EKTA B	8 291k	10:29:35	[Green/Red]	[Green/Red]
--	ELUX A	--	--	--	[Green/Red]
5k	ELUX B	119m	10:32:03	[Green/Red]	[Green/Red]
21	ERIC A	311k	10:04:59	--	[Green/Red]
0k	ERIC B	173m	10:31:59	[Green/Red]	[Green/Red]
36	FABG	2 606k	10:24:22	[Green/Red]	--
18k	GETI B	17m	10:31:50	[Green/Red]	[Green/Red]
27	HAKN	409k	10:22:40	[Green/Red]	--
5k	HEXA B	16m	10:32:01	[Green/Red]	[Green/Red]
14k	HM B	129m	10:32:02	[Green/Red]	[Green/Red]
20	HOLM A	57 000	10:01:48	--	[Green/Red]
143	HOLM B	13m	10:27:02	[Green/Red]	[Green/Red]
70	HUFV A	4 017k	10:29:32	[Green/Red]	--
--	HUFV C	--	--	--	--
92	HUSQ A	210k	10:12:29	--	[Green/Red]
16k	HUSQ B	12m	10:29:21	[Green/Red]	[Green/Red]
77	INDU A	1 992k	10:21:56	[Green/Red]	--
35	INDU C	5 550k	10:28:30	--	--
15	INVE A	691k	10:28:54	--	--
16k	INVE B	57m	10:31:59	[Green/Red]	--
20	KINV A	40 520	09:34:54	--	--
4k	KINV B	30m	10:30:38	[Green/Red]	--
69	LATO B	381k	10:28:52	--	--
15k	LIAB	10m	10:29:10	[Green/Red]	[Green/Red]

The recommendation colours (for all windows that displays recommendation bar) are configurable, accessible from right-click, Properties | Recommendation Colours.



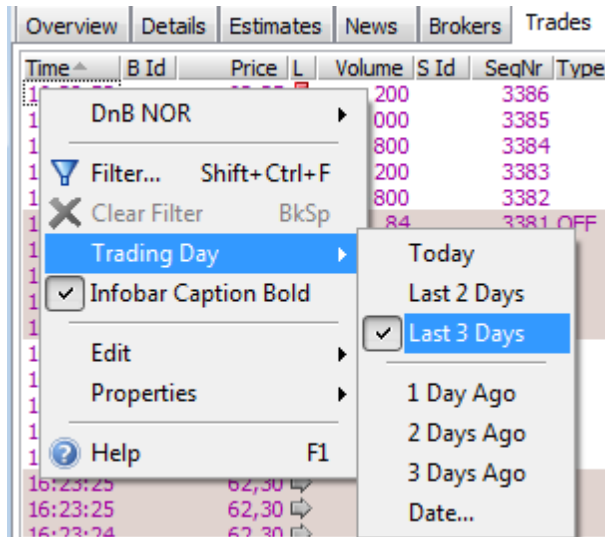
Editable Broker Statistics columns

The columns in the **All Brokers** and **Single Brokers** tabs can now be edited and saved.

Symbol window

Trades tab

The trades tab on the symbol window now allows you to see trades for up to the last three trading days.

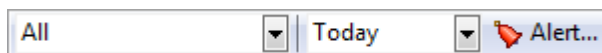


Improved VWAP calculation logic

The VWAP calculation logic has been modified to include new trades if the selected range includes the first row.

News tab

The news tab now includes an alert button on the toolbar to add a news alert for the symbol.



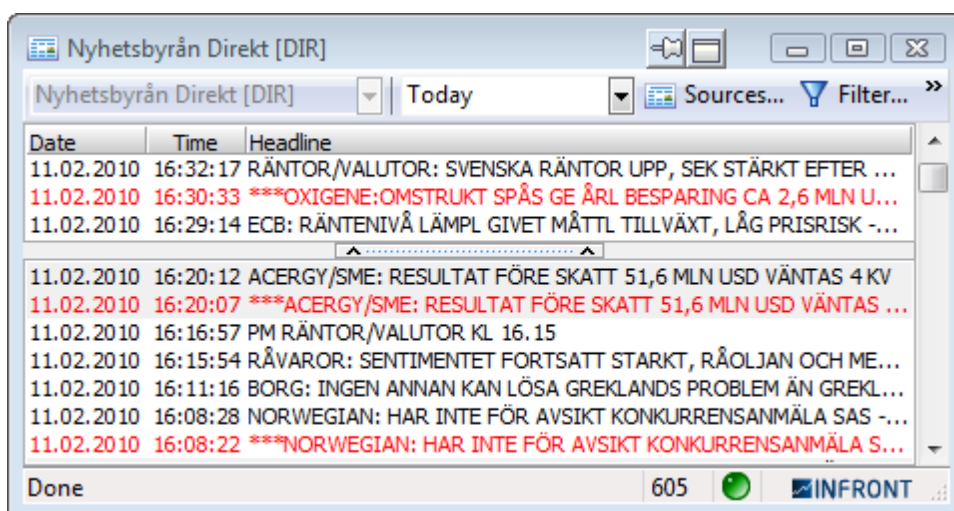
If a news alert already exists for the symbol, clicking the button will open the alert window so that the existing alert can be modified or deleted.

Brokers tab

The columns in the Brokers tab can now be edited and saved.

News window

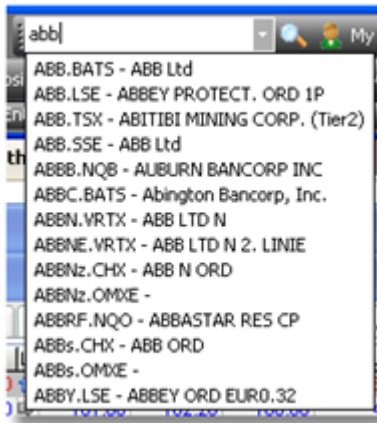
The logic has now been rewritten for the news window so that you can scroll the window without changing the focused line. The window will display the access type in the window caption (if selecting single feed).



Main window

The search edit has been improved with incremental search, displaying a list of matching symbols that

have a ticker name starting with the typed text.



Selecting a symbol in the list will display it in a new Overview window.

Broker Stats

There are a lot of improvements in the broker statistics window.

S	Id	Full name	#Buys	#Sells	#Int	#Trades	#Trades%	NBValue	IValue	TValue	TValue%	Time
<input type="checkbox"/>	SGP	Société Générale SA	1 499	563	24	2 110	1,77%	137m	2 387k	241m	1,96%	12:28
<input type="checkbox"/>	AVA	Avanza Bank AB	6 047	4 975	2 044	15 110	12,65%	101m	57m	835m	6,81%	12:28
<input type="checkbox"/>	CSB	Credit Suisse First Boston (Europe) Li	2 564	2 259	147	5 117	4,28%	78m	11m	474m	3,87%	12:28
<input type="checkbox"/>	NON	Nordnet Securities AB	4 530	4 642	1 247	11 666	9,76%	54m	43m	655m	5,34%	12:28
<input type="checkbox"/>	INT	Instinet UK Limited	446	68	--	514	0,43%	52m	--	70m	0,57%	12:28
<input type="checkbox"/>	SHB	Svenska Handelsbanken AB	3 846	3 514	445	8 250	6,90%	34m	573m	1 801m	14,69%	12:28
<input type="checkbox"/>	SWB	FöreningsSparbanken AB	3 695	3 086	364	7 509	6,28%	33m	42m	541m	4,41%	12:28
<input type="checkbox"/>	BPP	BNP Paribas Arbitrage SNC	971	475	46	1 538	1,29%	30m	1 273k	126m	1,03%	12:26
<input type="checkbox"/>	NDS	Nordea Securities AB	1 603	1 635	113	3 464	2,90%	19m	53m	353m	2,88%	12:28
<input type="checkbox"/>	OPS	Opstock Ltd	91	27	--	118	0,10%	16m	--	20m	0,16%	12:12
<input type="checkbox"/>	SBN	SkandiaBanken AB	635	380	11	1 037	0,87%	12m	158k	38m	0,31%	12:27

TValue: 12 262m TVolume: 93 492 #Trades: 119488

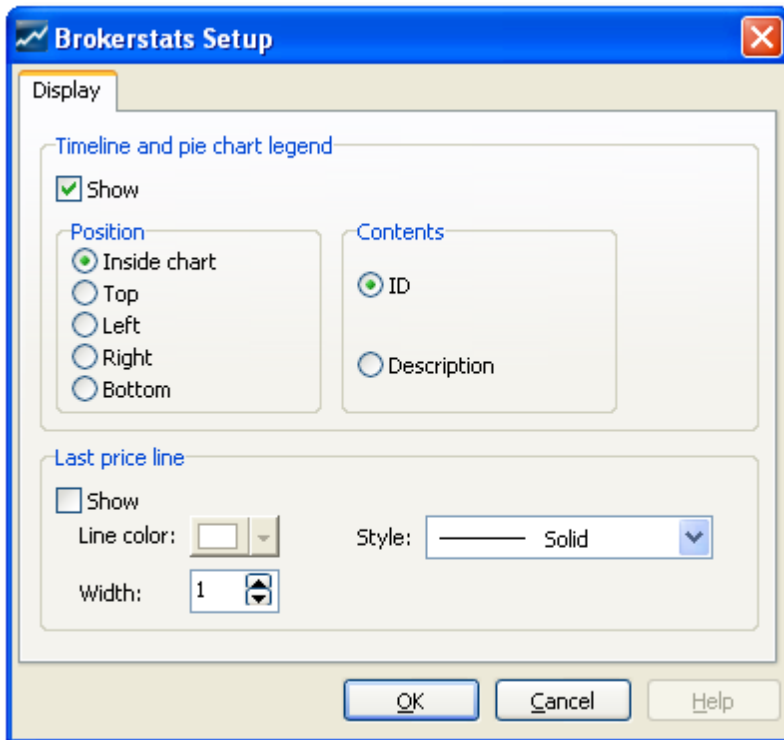
All main controls have been added to a new single toolbar. The report type (All Brokers, Single Broker or Single Symbol) can be selected in a drop down menu, along with the display type (grid, pie chart, bar chart and timeline chart). Further there is a new dynamic selection drop down menu, which also includes the new top 5/bottom 5 dynamic selection choice.

Columns Layout

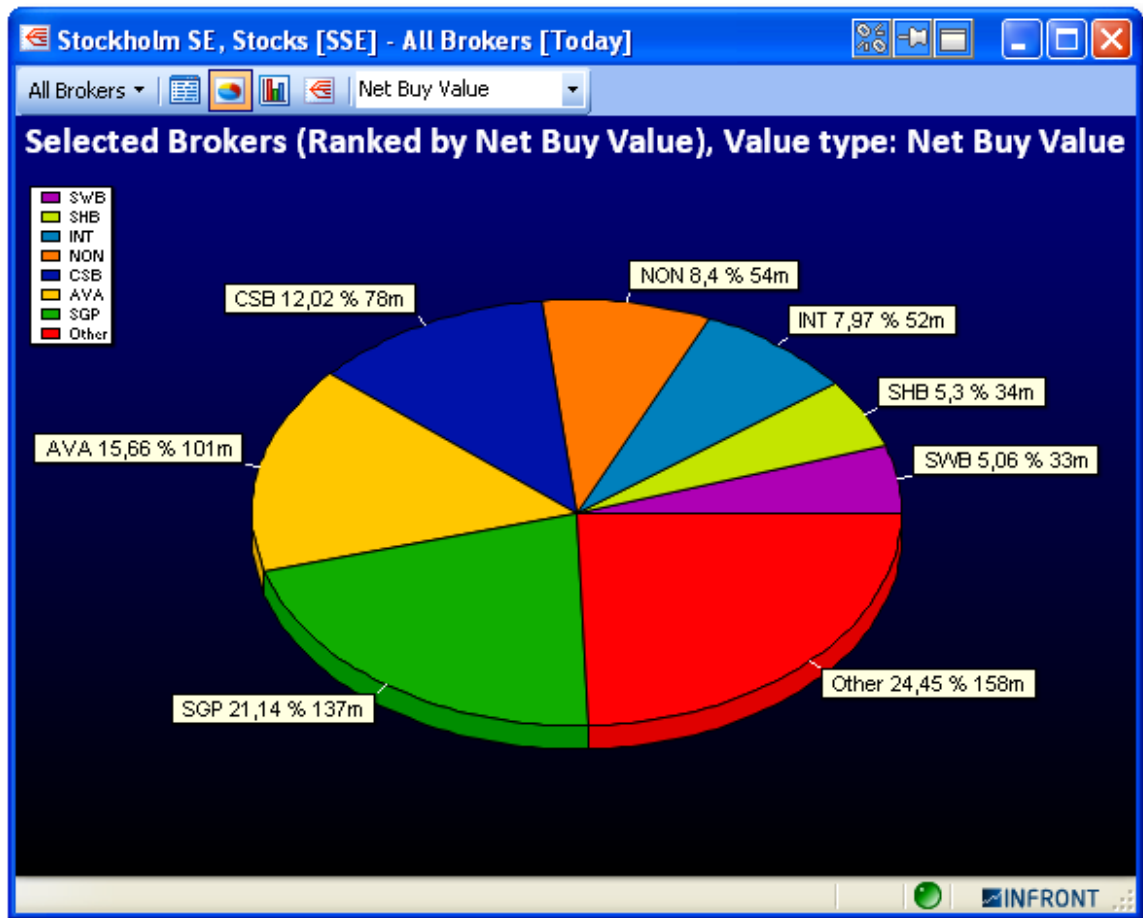
The standard edit layout context menu has been added to the broker statistic grids, including the possibility to save, save as default and restore factory layout choices. Also, there are new standard layouts for "All Brokers"; turnover, buy, sell and net.

Broker statistic charts

There are a number of common changes for all charts. The legend position can be changed from the new setup dialog:

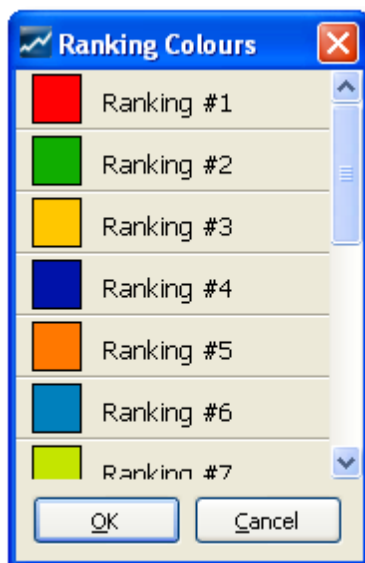


Legend can either display the symbol ticker id or the description. Background color and chart fonts can be changed from the standard dialogs accessible from the context menu. The title text has been updated to better reflect what is currently charted.

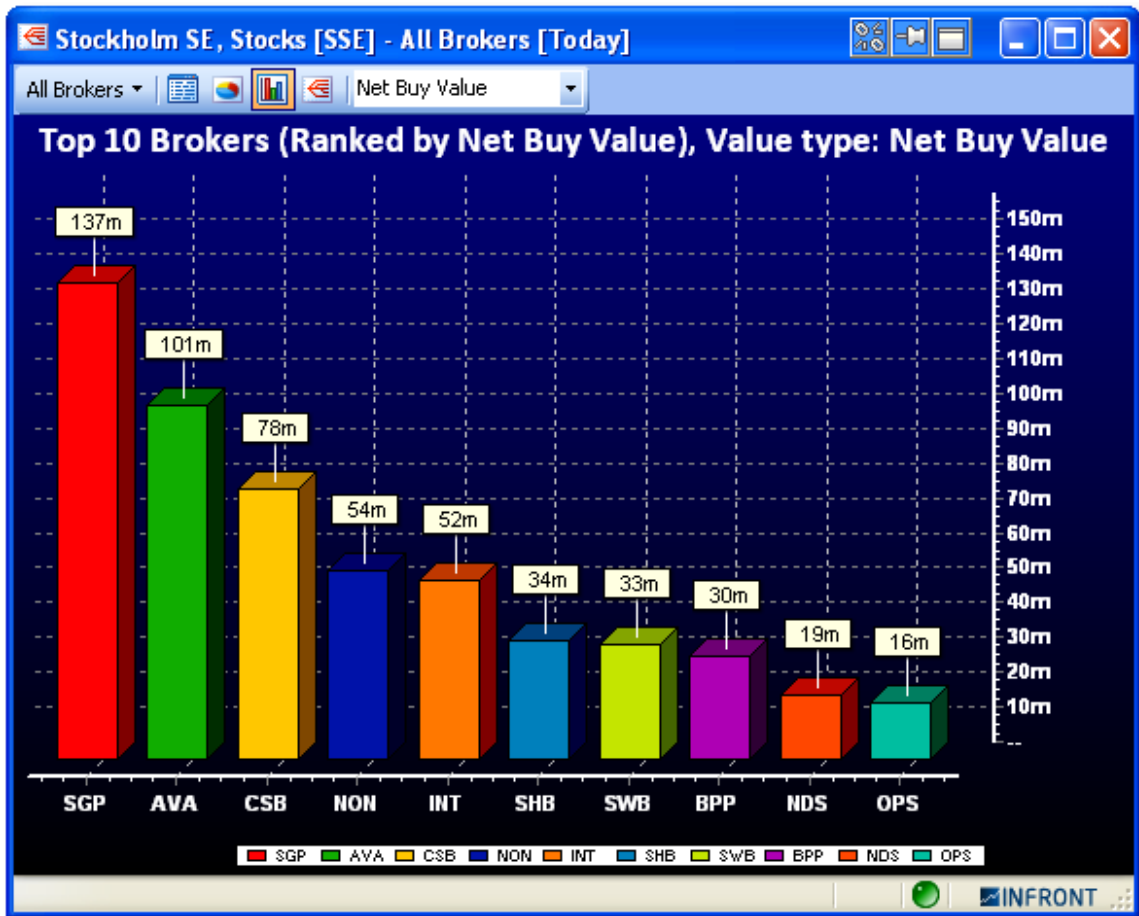


Ranking colours

The colours used in the charts are now taken from a standard ranking colour setup. These colours can be changed from the new dialog, accessible in the context menu choice "Ranking colours". The selection made here is a global list of colours for all broker statistic charts in the application.



Bar chart



A new broker statistic chart that will display the top 10 brokers or symbols according to current report type and selected value.

Timeline chart



When using the Single Symbol report type, it is possible to add a last price line in the timeline chart. The line can be added and configured through the setup dialog. All lines widths can be changed from the context menu choice "Lines width".

Trade Ticker

The horizontal and vertical trade tickers now includes an optional feed column.

Symbol	Feed	Price	Volume	B Id
BLIN	SSE	12,90	1 500	AV
SEB A	SSE	48,05	1 500	HQ
OMXS30LO	SSE	715,17		

New Feed column

New Orderbook Features

Combined orderbook (MBLfromMBO)

In earlier versions (4.7) you could display the normal Market By Level (MBL) orderbook that shows orders accumulated into unique price levels.

MM #	B Size	Bid	Ask	A Size	MM #
2	2 000	110,20	110,40	6 145	8
18	18 095	110,10	110,50	18 226	18
9	12 884	110,00	110,60	14 557	11
9	9 076	109,90	110,70	16 451	17
11	19 353	109,80	110,80	19 519	13
4	8 616	109,70	110,90	26 994	14

The Market By Order (MBO) orderbook shows one line for each order, possibly showing multiple lines with the same price.

Order ID	B Size	Bid	Ask	A Size	Order ID
0001271622	1 000	110,20	110,40	669	0002083952
0002167192	1 000	110,20	110,40	1 700	0002095260
0001255684	1 759	110,10	110,40	1 000	0002107914
0001255950	1 000	110,10	110,40	736	0002121143
0001256399	1 000	110,10	110,40	100	0002123183
0001257826	500	110,10	110,40	500	0002137542

New in this version is that the MBL orderbook that the clients accumulates from the MBO data supports expansion columns with a [+] icon to expand any level into the separate orders that make up that level.

MM #	B Size	Bid	Ask	A Size	MM #
2	2 000	110,20	110,40	4 900	8
17	18 637	110,10	110,50	16 287	16
10	14 222	110,00	110,60	16 352	14
9 (1)	9 076	109,90	110,70	16 451	18 (1)
11	19 353	109,80	110,80	19 519	13 (1)
4	8 616	109,70	110,90	26 994	14 (2)
3	3 042	109,60	111,00	17 643	11

Click the [+] once to expand the level.

MM #	B Size	Bid	Ask	A Size	MM #
2	2 000	110,20	110,40	4 900	8
	1 000		110,50	14 500	16
	1 000		110,60	14 782	12
18	20 591	110,10	110,70	16 451	18 (1)
6	11 572	110,00	110,80	21 019	14 (1)
9 (1)	9 076	109,90	110,90	26 994	14 (2)
11	19 353	109,80	111,00	17 643	11

Click the [-] again to collapse the level. The expansion follows the price as the number of levels change. Note, you can limit the number of MBO orders to expand by default in the visual preferences in the orderbook setup dialog.

Notice:

- MBO orders normally have the same price as the level price, so this is not shown to reduce the clutter and repetition

- When there is a NOII level (more below), the MBO order price may differ from the level price. In this case, the MBO price is shown

- For some MBO orders the server is able to deduce what Broker-id it belongs to (for partially executed orders, the ID is taken from the stream of trades).

MM #	B Size	Bid	Ask	A Size	MM #
9 (1)	12 798	159,80	159,90	800	1 (1)
AVA	794	AVA	ENS	800	ENS
	2 200		160,00	12 278	9
	2 000		160,10	10 643	8 (1)
	878		160,20	16 277	13
	6 000		160,30	10 584	9 (1)
	13		160,40	13 616	8 (1)

For instance in the screenshot above, we can see that the first order in the Bid queue is from the broker AVA (Volume 794, Price 159,80) and the top Ask level is from the broker ENS.

Display Member firm orders in orderbook

A brokerage house typically has a large number of active orders in the market on a number of different instruments at any given time. Infront has created a server component (that needs to be installed on-site) and client support to show these orders in all open orderbooks in the client. A user in the brokerage house may be given access to all or a subset of the types of orders.

With the server in place and the right credentials assigned to the user, the client application will indicate these orders by marking them with a special color (in much the same way as the users own orders can be indicated today). In addition to the coloring in the Price column, the MM# column and the Price column will show the ID associated with the order (for instance the broker's name or initials).

Support for Net Open Imbalance Indicator (NOII)

During the pre-opening, the orderbooks of many instruments will typically cross. This indicates that there is an imbalance in the market and that a number of orders will auto-match during the opening call. The exchange now sends out the dynamically calculated NOII price and volume during the per-opening phase.

To indicate that this NOII level is special it is colored in a different background color.

MM #	B Size	Bid	Ask	A Size	MM #
--	22 000	110,50	110,50	22 000	28
11 (1)	8 249	110,20	110,60	17 231	13
23	21 813	110,10	110,70	24 420	15 (1)
9	12 527	110,00	110,80	21 019	14 (1)
8 (1)	8 511	109,90	110,90	31 994	15 (2)
12	20 353	109,80	111,00	17 643	11
5	9 116	109,70	111,10	8 629	6

If you expand the NOII level you may find orders that differ (is better) than the NOII level price.

MM #	B Size	Bid	Ask	A Size	MM #
--	22 000	110,50 +	110,50	22 000	27
11 (1)	8 249	110,20 +	110,40	858	
22	20 427	110,10 +	110,40	500	
9	12 527	110,00 +	110,40	142	
8 (1)	8 511	109,90 +	110,40	444	
12	20 353	109,80 +	110,40	662	
5	9 116	109,70 +	110,40	25	
2	2 042	109,60 +	110,40	25	
1	100	109,50 +	110,40	542	
1	5 000	109,40 +	110,40	749	
1	5 000	109,20 +	110,40	1 559	
3	210	109,00 +	110,40	1 000	
1	100	108,50 +		1 000	
1	100	108,10 +		500	

Consolidated Orderbook

The Consolidated Orderbook now has a setup option to show the +/- column as a real value, a percentage or both.

Trade Info				
Symbol	Volume	Last	+/-	+/-%
ABBN [VRTX]	1 916k	159,89	0,04	0,17%
ABBnz [CHX]	657k	159,89	0,04	0,17%

Chart

Order entry lines

There are four new price lines available from the Add Study menu choice in the context menu. It is now possible to add a graph for orders and trades that are currently active for the selected symbol. The chart will plot dots which reflects time and price for buy/sell orders and buy/sell trades.

New studies: relative return and relative strength

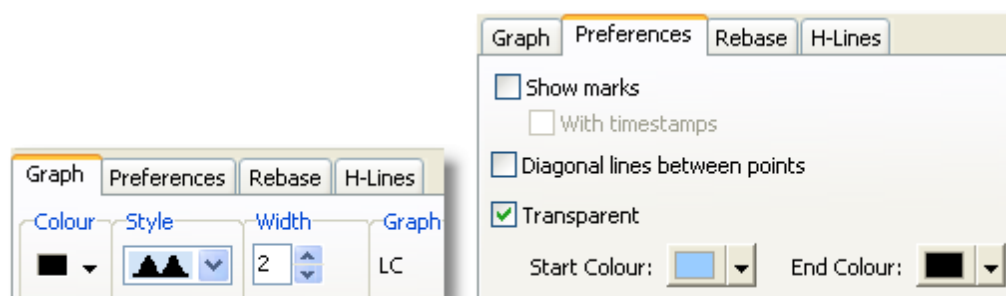
There are two new compare studies available in the context menu.

Relative return: select "<New> indexed to 0 (percent)" in the context menu under "Add Compare Study". Select a symbol in the dialog in order to compare them in percent. The formula used is $\frac{\text{SymbolA}}{\text{SymbolB}}\%$ where symbol a is the current LC.

Relative strength: select "Ticker RS <New>" in the context menu. Select a symbol in the dialog in order to compare the two symbols. It is calculated dividing the price performance of a stock by the price performance of an appropriate index for the same time period.

Transparent fill

When selecting the fill line style in the graph parameters dialog, there will be a new choice to set the fill transparent in the Preferences page:



Buy setting a start and end colour, the graph will be filled with a gradient.



Bar chart

In the bar chart toolbar, there is a new drop down called Sort which contains all the available field types. By selecting a field type in the list, the chart will sort on this selection while graphing the values from the original selected field type.

Order entry

Find trades

This is a new window where it is possible to search for member firm trades in the back office. The window is accessed from the context menu in order status window. The window requires a user access.

It is possible to add a range of search criteria's in the input boxes. Click on "Find Symbol" to open a symbol selection dialog in order to find a specific symbol. The search fields will automatically be updated with values from the selected symbol. Click on "Time Filter" in order to narrow down the time span for trades. Please remember to fill all four values, they will all be used as a filter when searching for a trade.

Trade reporting

If supported by the order entry server, there will be added a new page in the order status window called "Trade Report". Please notice that trade reports requires user access. The trade report status window will display a list of all inserted trade reports. It will show a real time updated status for the report.

Accumulated Trades

There is a new accumulation filter called Order ID in the Accumulated Trades page of the Order Status window. Using this accumulation filter, it is possible to see one line for each unique combination of symbol and Order ID. There is also a new Order ID column.

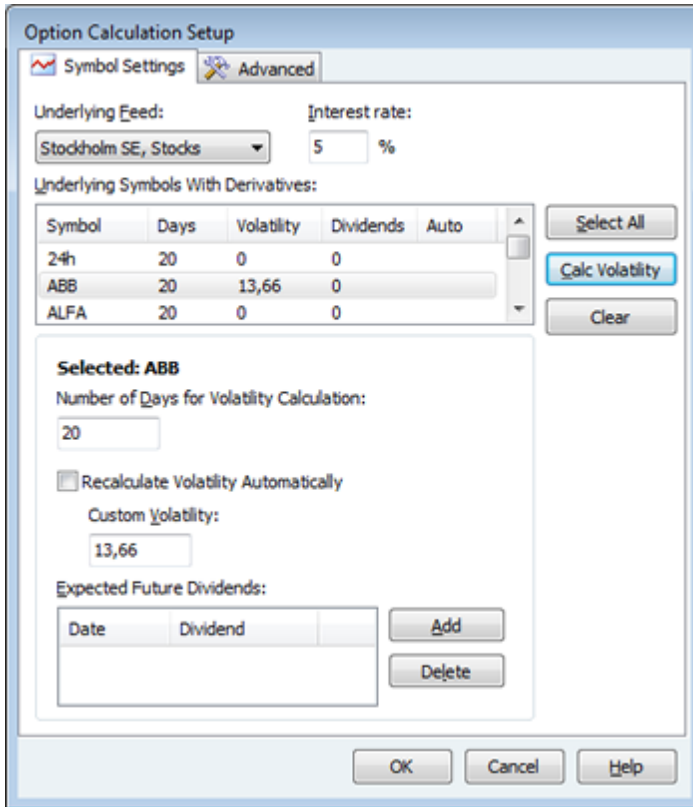
Portfolio

The Portfolio page of the Order Status window now has support for three new columns called Overnight Volume, Bought Today Volume and Sold Today Volume. They only contain values for servers that support these values.

Option Calculation setup

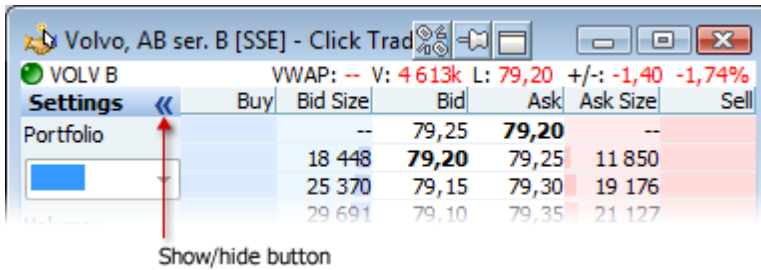
The option calculation setup dialog has been redesigned for a more fluent user interaction.

There is also a new option to have the Volatility for one or more instruments to be recalculated automatically when the application is started.



Click Trading

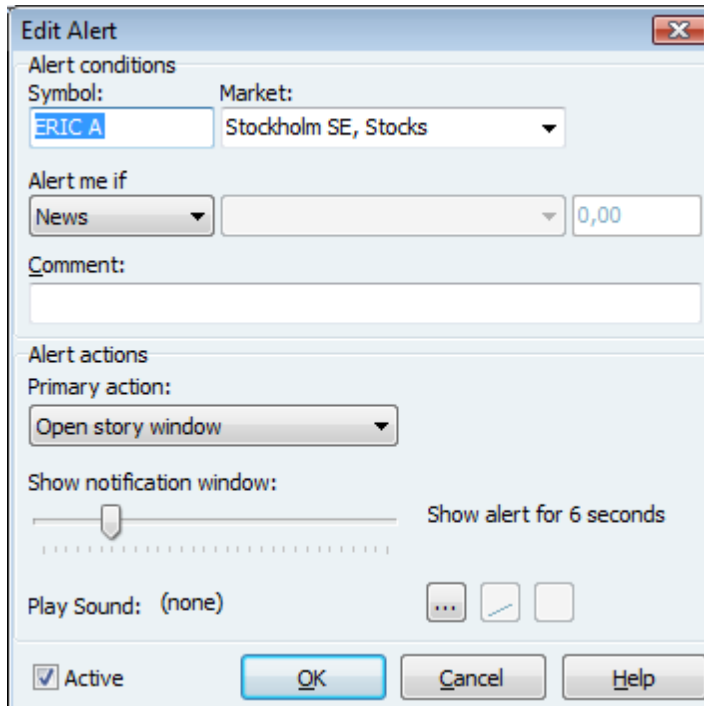
The Click trading window now includes a button to show/hide the settings panel.



Miscellaneous improvements

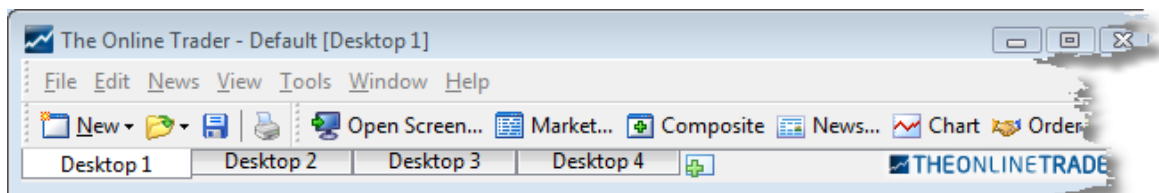
New alert type in Alert Monitor

The Alert Monitor now includes a new **News** alert type that is triggered when a news item is received for the specified symbol.



Open Screen toolbar button

There is now a new button on the standard toolbar to open a new screen.



New button to create desktop

There is now a new button on the desktop tab bar that simplifies creation of new desktops.

